

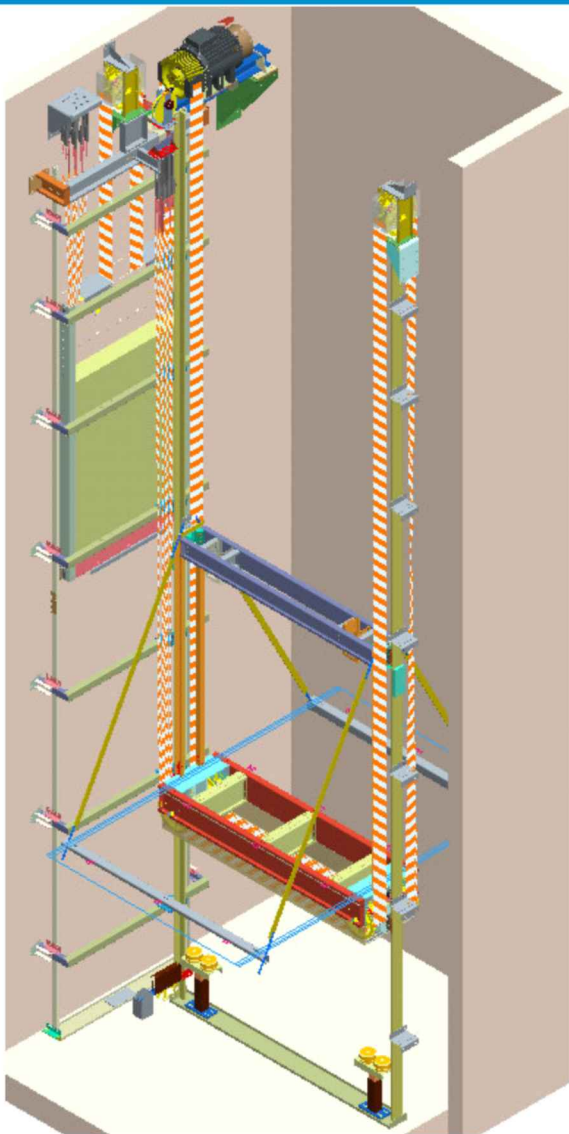
# ATLAS Super Gigas

TRACTION GEARLESS MRL



Your 1<sup>st</sup> Choice in Lifts

## The heavy weight champion!



- > Rated load up to 5000 kg
- > Travel max up to 45m
- > Speed up to 1,0 m/s
- > Pit min 1400mm
- > Headroom min 3800mm
  
- > High performance with minimum energy consumption (Gearless, synchronous, permanent magnet, closed loop, VVVF traction machine)
- > Ease of installation
- > Comply with EN 81.1
- > Guarantee and technical support by



Your 1<sup>st</sup> Choice in Lifts

# ATLAS Super Gigas

TRACTION GEARLESS MRL



Your 1<sup>st</sup> Choice in Lifts

Technical specifications					
Rated Load(Kg)	3000	3500	4000	4500	5000
Roping	4:1				
max Travel	45m *				
Number of stops	16				
max Car speed	1,0m/s				
min Pit	1400m				
min Headroom	3800 mm (for max external car height=2460mm) 3900 mm (for max external car height =2560mm) 4000 mm (for max external car height =2660mm) 4100 mm (for max external car height =2760mm)				
max Car frame weight	750kg				
max Car Weight (including car door)	7600kg				
Car guides DBG	min= 2000 max = 2700mm				
Car Width (=DBG-300)	min = 1700 max= 2400mm				
Car Length	min = 2700 max= 4200mm				
max Car weight with car doors **	1400kg	1400kg	1500kg	1500kg	1850kg
Car guide rails Cwt guide rails	T125x82x16 / T70x70x9 or T75x62x10				
max Vertical distance btw brackets	2000mm				
Ropes (type)	250T Φ10 (67.7kN)				
Ropes Qty	8 x Ø10	8 x Ø10	8 x Ø10	10 x Ø10	10 x Ø10
motor/inverter	ZIEHL-ABEGG SM225.60B ή SM250.60B / ZETADYN				

\*For travel length >45m. Please call our export sales department  
\*\*Including compensation chain when necessary